



University of  
New Haven

# Welcome to **SOAR**

---

STUDENT ORIENTATION  
ADVISING & REGISTRATION

---



University of  
New Haven

**SOAR**



# The Charger Experience: Commuter/ Off-Campus Students



University of  
New Haven

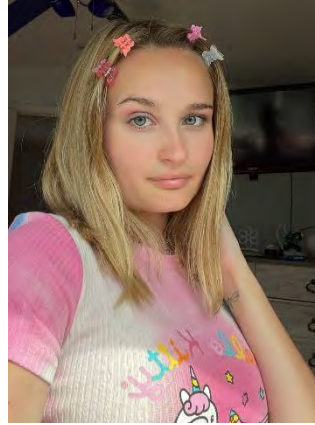
**SOAR**

# Commuter and Off Campus Student Liaisons

# Commuter Assistants



Cody DiBlasio



Eliza Hall



Daneiry King



Olivia Kostecki



Gabby Picon

# What Does a Commuter Assistant Do?

The Commuter Assistant helps to enhance the experience of commuter/off campus students and their understanding/knowledge of the University. Acting as mentors, the Commuter Assistants will serve as liaisons in both individual and group settings while connecting you with other commuter/off campus students.

This program, by promoting involvement, and providing resources, will set you on the path to excellence at The University of New Haven and instill a sense of community.

What You Can Expect:

- **Mentorship**
- **Positive impact**
- **Involvement**
- **Belonging**



# **More Commuter Team Members:**

**Commuter Club  
@unewhavencommuters on  
Instagram**

**Undergraduate Student  
Government Association  
Commuter Representative**



# Dining On Campus



For information on Commuter Meal Plans, please visit [newhaven.edu/mealplans](http://newhaven.edu/mealplans)



# Parking on Campus

- Permits are required for parking on campus
- To check on eligibility and information regarding your parking permit, please visit [newhaven.edu/parking](http://newhaven.edu/parking)
- More information can be found on student's myCharger portal





# Day-Use Lockers

- Available in Bartels Hall (near Alumni Lounge), Westside Hall (near classrooms) and the Bartels Student Activities Center (BSAC)



# Charge In & Welcome Week

## **Part two of our orientation program is Charge In.**

Be prepared to start your University of New Haven journey by learning everything you need to know about your first days on campus. That way when you arrive, you'll be prepared to – CHARGE IN!

### **Charge In 2022**

**Thursday August 25-Sunday August 28**

- *Please check [newhaven.edu/chargein](http://newhaven.edu/chargein) for details later this summer!*
- *Mandatory all dates (SOAR part II)*

### **Welcome Week**

**Monday August 29-Monday September 5**



2022-2023  
Involvement Fair  
Friday  
September 2





# Up Next:

## Group 1: Choose your next adventure!

1. *Center for Student Success and Center for Learning Resources (Beckerman Recreation Center)*
2. *Accessibility Resources Center (Moulton Lounge, Bartels Hall)*
3. *Digital Resources for Families (Gerhring Hall 301)*

## Group 2:

*Resource Fair, Beckerman Recreation Center, 2<sup>nd</sup> floor track*



# Contact Us!

[chargerscommute@newhaven.edu](mailto:chargerscommute@newhaven.edu)